



BOWEN'S LOOKOUT

13 Bowen Road, Mid-levels, Hong Kong
香港半山寶雲道13號



Nestled on Bowen Road in Mid-Levels,
a coveted area neighboring consulates and iconic developments,
Bowen's Lookout blends convenient living with access to all corners of the city,
with Admiralty and Central just a short drive away.

Bowen's Lookout 坐落港島半山尊貴地段寶雲道，
環境寧謐，綠樹林蔭，毗鄰領事館及豪宅。
來往金鐘和中區只需數分鐘車程，交通便利。

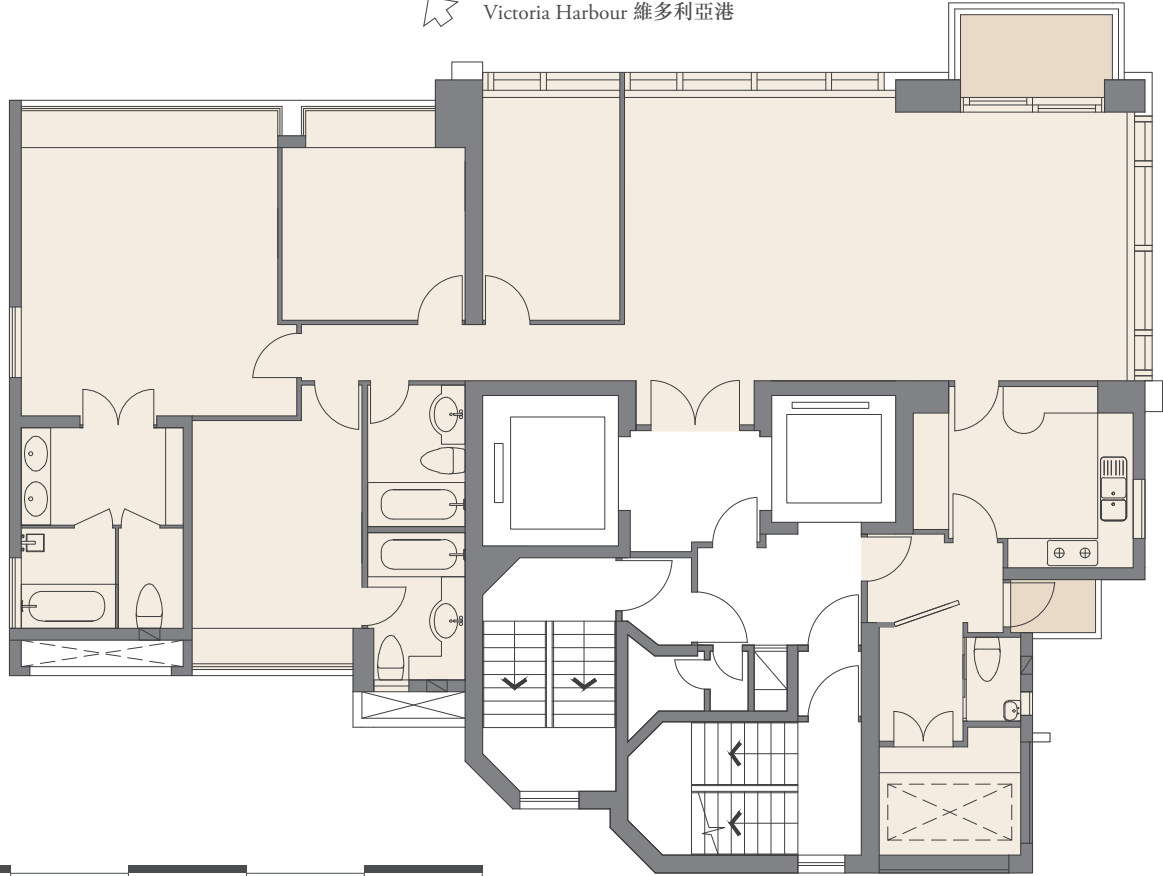


UNIT TYPE & SIZE 單位類型及面積

- 2,322 & 2,388 sq.ft. (Gross Area)
4-bedroom with 2 en-suites
- 4,050 sq.ft. (Gross Area) Penthouse duplex
- One unit per floor with grand private lobby
- 50 sq.ft. balcony commanding panoramic Victoria Harbour views
- 2,322 及 2,388 平方呎(建築面積)
4房雙套房設計
- 4,050 平方呎(建築面積)頂層雙層單位
- 一梯一伙，設有華麗私人大堂
- 50 平方呎露台，俯瞰壯麗維多利亞港景觀

TYPICAL UNIT 標準單位

Victoria Harbour 維多利亞港



Peak / Mountain View 山頂景觀

0 10m

CLUBHOUSE FACILITIES 會所設施





Not to scale. For identification purpose only
 僅供參考，並不按實際比例

- 
 MTR
港鐵
- 
 Bus stop
巴士站
- 
 Park
公園
- 
 School
學校
- 
 Shopping Mall
商場
- 
 Bank / ATM
銀行 / 自動櫃員機
- 
 Sightseeing Spot
觀光景點
- 
 Golf Course / Clubs / Tennis Courts
高爾夫球場 / 俱樂部 / 網球場



Leasing Enquiries 租務查詢

8107 0038 ☎ 6396 7989

www.bowenslookout.com.hk leasingcs@sino.com



The image/picture has been edited and processed with computerized imaging techniques. It shall not be taken as depicting or representing the actual condition or appearance of the development and is for reference only. The surrounding environment, buildings or facilities may change from time to time. Please conduct an onsite visit for a better understanding of the development, its surrounding environment and the facilities nearby. This promotional material does not constitute and shall not be construed as giving any offer, representation, undertaking or warranty, whether express or implied.
 照片經電腦修飾處理及/或編輯，僅供參考。本文描述物業周邊之環境、設施可能隨時有所改變，承租人須進行實地視察。若上述物業資料有任何更改，恕不另行通知。本文並不構成任何要約或合同的任何一部分。業主、業主委託的租務代理人、信和集團及物業管理團隊不對以上資料的準確性承擔任何責任。如中文和英文版本有任何差異，一律以英文版本為準。