


# ONE CENTRAL PLACE

---

Minutes to  Hong Kong Station & Central Station <sup>3(b)</sup>

數分鐘迅達港鐵香港站及中環站 <sup>3(a)</sup>



33 Gage Street, Central, Hong Kong

香港中環結志街33號



# A New Panorama of Modern Living 匠心時尚生活



Prestigious 1-3 bedroom designer apartments with premium concierge service for lease, just minutes' away from Central Business District and MTR stations <sup>3(b)</sup>.

Beyond elegance, One Central Place features contemporary architecture with artistic flair, capturing the essence of sophisticated metropolitan living, with flexible leasing options.

矜罕一房至三房尊貴住宅提供時尚設計傢俱及星級服務，  
無縫連接中環核心商圈 <sup>3(a)</sup>。One Central Place 薈萃  
國際頂尖團隊的匠心設計，結合藝術與現代建築，  
尊擁國際都會文化氛圍，並提供靈活多元租賃選擇。

Clubhouse <sup>4(b)</sup>

會所設施 <sup>4(a)</sup>



Masterclass Living <sup>4(b)</sup>

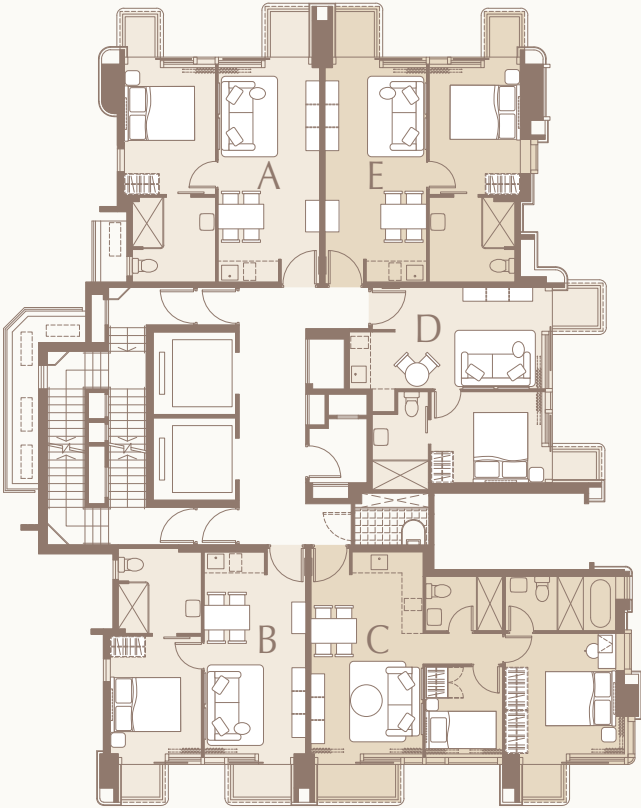
臻品生活 <sup>4(a)</sup>



6/F – 12/F, 15/F – 17/F Floor Plan <sup>6(b)</sup>  
6樓至12樓、15樓至17樓樓面平面圖 <sup>6(a)</sup>



Victoria Harbour / IFC 維多利亞港 / 國際金融中心



Mid - Levels 中半山

Unit A

455 sq. ft. 平方呎

1-Bedroom Suite 一房單位

Unit B

432 sq. ft. 平方呎

1-Bedroom Suite 一房單位

Unit C

632 sq. ft. 平方呎

2-Bedroom Suite 兩房單位

Unit D

394 sq. ft. 平方呎

1-Bedroom Suite 一房單位

Unit E

458 sq. ft. 平方呎

1-Bedroom Suite 一房單位

\* All unit sizes are shown in  
saleable area  
所有單位均為實用面積

Scale 比例 0 5M / 米

Services & Facilities  
服務及設施

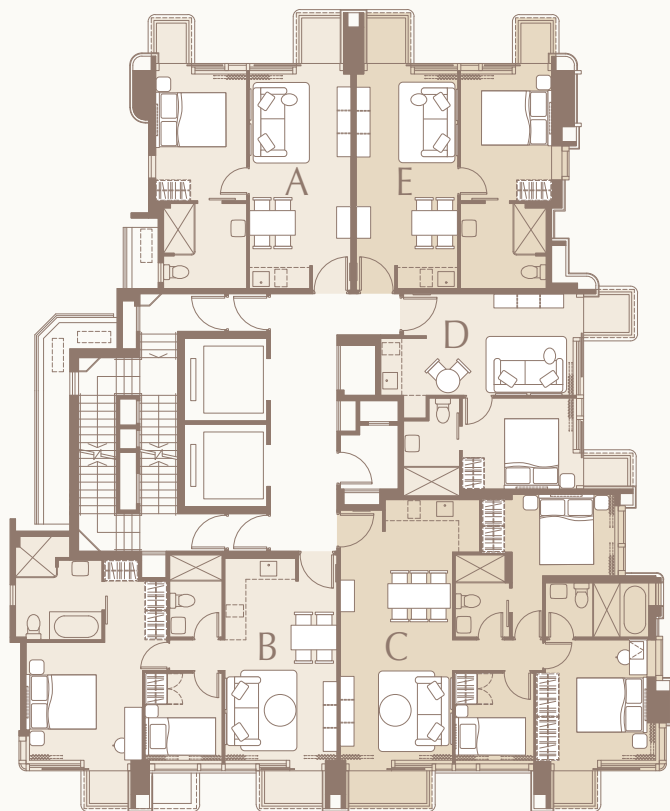
- Twice a week housekeeping services  
每週兩次房間清潔服務
- Concierge services  
禮賓部
- Maintenance services  
維修服務
- Exclusive Sino Living APP  
專屬APP
- 24-hour security services  
24小時保安服務
- Smart Mailbox  
智能感應郵箱
- Access control system  
門禁系統

## 18/F – 19/F Floor Plan <sup>6(b)</sup>

## 18樓至19樓樓面平面圖 <sup>6(a)</sup>



Victoria Harbour / IFC 維多利亞港 / 國際金融中心



Mid - Levels 中半山

### Unit A

**455** sq. ft. 平方呎

1-Bedroom Suite 一房單位

### Unit B

**672** sq. ft. 平方呎

2-Bedroom Suite 兩房單位

### Unit C

**809** sq. ft. 平方呎

3-Bedroom Suite 三房單位

### Unit D

**383** sq. ft. 平方呎

1-Bedroom Suite 一房單位

### Unit E

**458** sq. ft. 平方呎

1-Bedroom Suite 一房單位

\* All unit sizes are shown in  
saleable area  
所有單位均為實用面積

Scale 比例 0 5M / 米

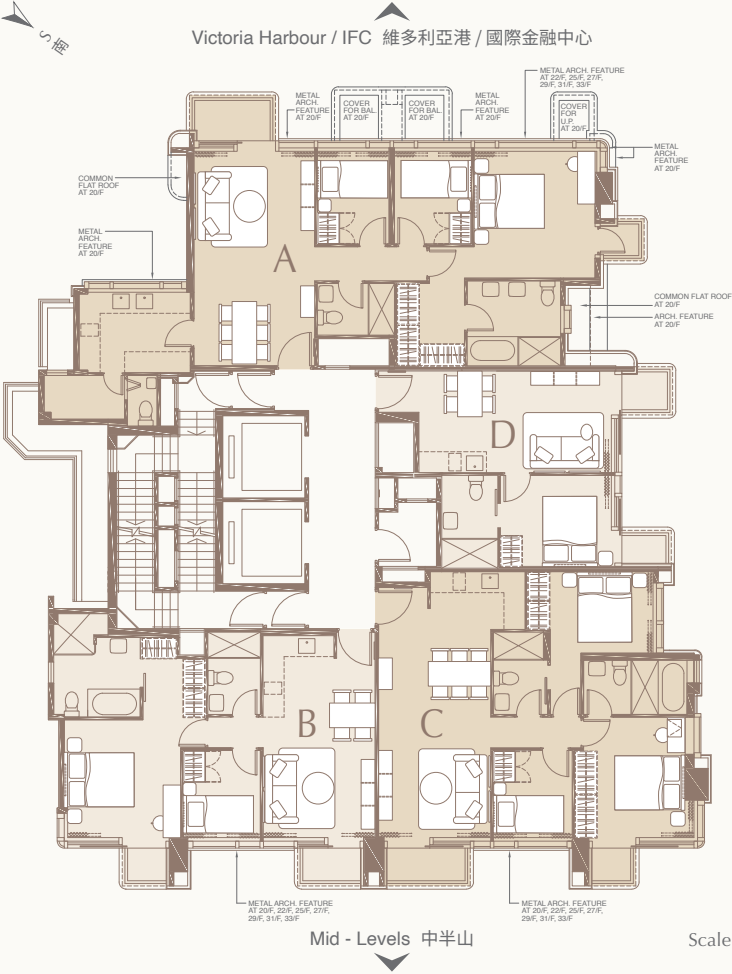
## In-room Provisions

### 居室配套

- Fully equipped kitchen and bathroom  
設備完善的廚房及浴室
- 2-in-1 washer and dryer  
二合一洗衣乾衣機
- Smart TV with Now TV channels and local channels  
智能電視連Now TV及本地頻道
- Complimentary 5G broadband internet and Wi-Fi  
免費5G無線寬頻上網服務
- Complimentary local phone calls  
免費本地電話服務

20/F – 23/F, 25/F – 33/F Floor Plan <sup>6(b)</sup>

20樓至23樓、25樓至33樓樓面平面圖 <sup>6(a)</sup>



Unit A

992 sq. ft. 平方呎  
3-Bedroom Suite 三房單位

Unit B

672 sq. ft. 平方呎  
2-Bedroom Suite 兩房單位

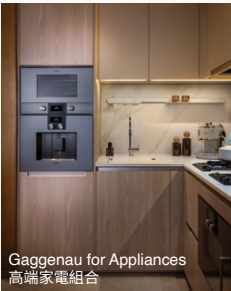
Unit C

812 sq. ft. 平方呎  
3-Bedroom Suite 三房單位

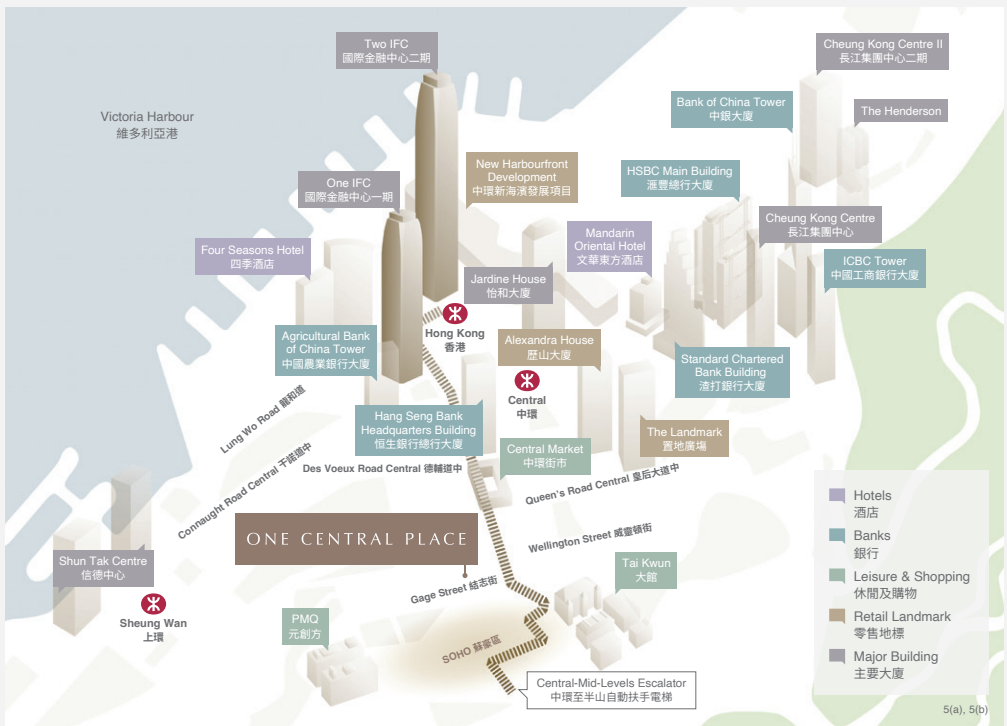
Unit D

407 sq. ft. 平方呎  
1-Bedroom Suite 一房單位

\* All unit sizes are shown in  
saleable area  
所有單位均為實用面積



Scan QR Code for  
more Unit Floor Plans  
掃描二維碼獲取  
更多單位平面圖



## The Pinnacle of Connectivity 都會交通樞紐

Within walking distance to Central-Mid-Levels Escalator <sup>2(b)</sup>, MTR station and Airport Express <sup>3(b)</sup>, One Central Place embodies Hong Kong's pinnacle of connectivity and access. One Central Place 座落中環都會核心地段，中環至半山自動扶手電梯 <sup>2(a)</sup>、地鐵站及機場快線近在咫尺 <sup>3(a)</sup>，提供全方位交通網絡。

Leasing Enquiries 租務查詢

8107 0038 ☎ 6396 7989



33 Gage Street, Central, Hong Kong

香港中環結志街33號

www.sino-residential.com leasing@sino.com

Estimated journey time from One Central Place to various MTR stations <sup>3(b)</sup>

從 One Central Place 前往各港鐵站之步行時間 <sup>3(a)</sup>

To 往	Approx. 約 (min. 分鐘)
✳ Central Station 中環站	6.5
✳ Hong Kong Station Airport Express 香港站機場快線	7.5

1(a) 任何本單張內的圖片、畫像、平面圖或資料並不構成發展商的任何不論明示或隱含之要約、陳述、承諾或保證。該圖片、畫像或平面圖並非按照比例繪畫，亦經簡化及電腦修飾處理。本單張內的資料以政府相關機構不時公布的資料為準。  
2(a) 接納發展項目的行人天橋之位置及設計以相關政府部門批准為準。3(a) 由發展項目出發，步行距離可達中環站及香港站。工作人員於2024年2月27日由發展項目步行至中環站D出口之步行時間約為6.5分鐘；由發展項目步行至香港站C出口的步行時間約為7.5分鐘。僅供參考。實際所需時間受天氣狀況、過路狀況、行走路線及個人步速影響而有所差異。4(a) 此真實照片於2025年4月15日於發展項目拍攝，經電腦修飾處理，僅供參考。發展商保留其更改或改變發展項目之設計、規格、特徵、圖則及資料之一切權利。本單張內並不構成任何發展商就本發展項目及其發展不論明示或隱含之要約、承諾、陳述或保證。5(a) 繪圖內顯示的地圖資料來源為Google Maps 網頁版。2024年2月27日。繪圖並非按比例繪畫，亦經簡化及電腦修飾處理。繪圖中所顯示之發展項目的位置、區域、商場、道路、設施、地點、車站位置、新樓及交通網絡等(如有)僅供參考，並以政府、相關機構或項目持份者不時公布或決定為準。相關資料乃反映本廣告宣傳資料印刷日期之狀況，且可能不時出現改變。6(a) 繪圖平面圖的實用面積以及露台、工作平台及陽台(如有)的樓面面積，是按照《一手住宅物業銷售條例》第8條計算得出的。其他指明項目的面積(不計算入實用面積)，是按《一手住宅物業銷售條例》附表2第2部計算得出的。上述所列之面積以平方米表示。上述以平方米所列之面積由以平方米所列之面積以平方米。10,764平方米換算為四捨五入至整數平方呎之方法計算得出。與以平方米表示之面積之面積可能有些差異。  
1(b) None of the photos or images or floor plans shown or statements included in this leaflet shall constitute or be construed as constituting the Developer giving any offer, representation, undertaking, or warranty, whether express or implied. They are not drawn or resized to scale and have been edited and processed with computerized imaging techniques. Any information shown in this leaflet are subject to the materials issued by the relevant Government authorities from time to time. 2(b) The location and design of the footbridge shall be subject to the latest approval by the relevant government departments. 3(b) The estimated walking time refers to the walking time by a staff of the Development on 27 February 2024 from the Development to Exit D2 of MTR Central Station which takes approximately 6.5 minutes and the walking time by that staff from the Development to Exit C of the MTR Hong Kong Station is approximately 7.5 minutes. The estimated walking time is for reference only and the actual walking time is subject to the actual road conditions, weather, route and walking pace. 4(b) The photo is taken at the Development on 15 April 2025 and has been processed with computerized imaging techniques and is for reference only. The Developer reserves all rights to amend/change the design, specifications, features and plans and materials of the Development thereof, without prior notice. The photo shall not constitute or be construed as constituting the Developer giving any offer, representation, undertaking, or warranty, whether express or implied. 5(b) The source of the information shown in this drawing is Google Maps (obtained on 27 February 2024). This drawing is not drawn to scale and it has been edited and processed with computerized imaging techniques and represents an artist's impression only. The location of the Development, district, malls, facilities, location of public transport stations, strategic routes and transportation network (if any) shown in this drawing is for reference only, and are subject to the information and materials issued by the relevant Government authorities or relevant stakeholders. The information shown in this drawing reflects the status as of the printing date and is subject to change from time to time. 6(b) The saleable area contained in the floor plans is calculated in accordance with Section 8 of the Residential Properties (First-hand Sales) Ordinance (Cap. 621). The areas in square feet have been converted from square metres based on a conversion rate of 1 square metre = 10.764 square feet and rounded off to the nearest integer which may be slightly different from that shown in square metre.

